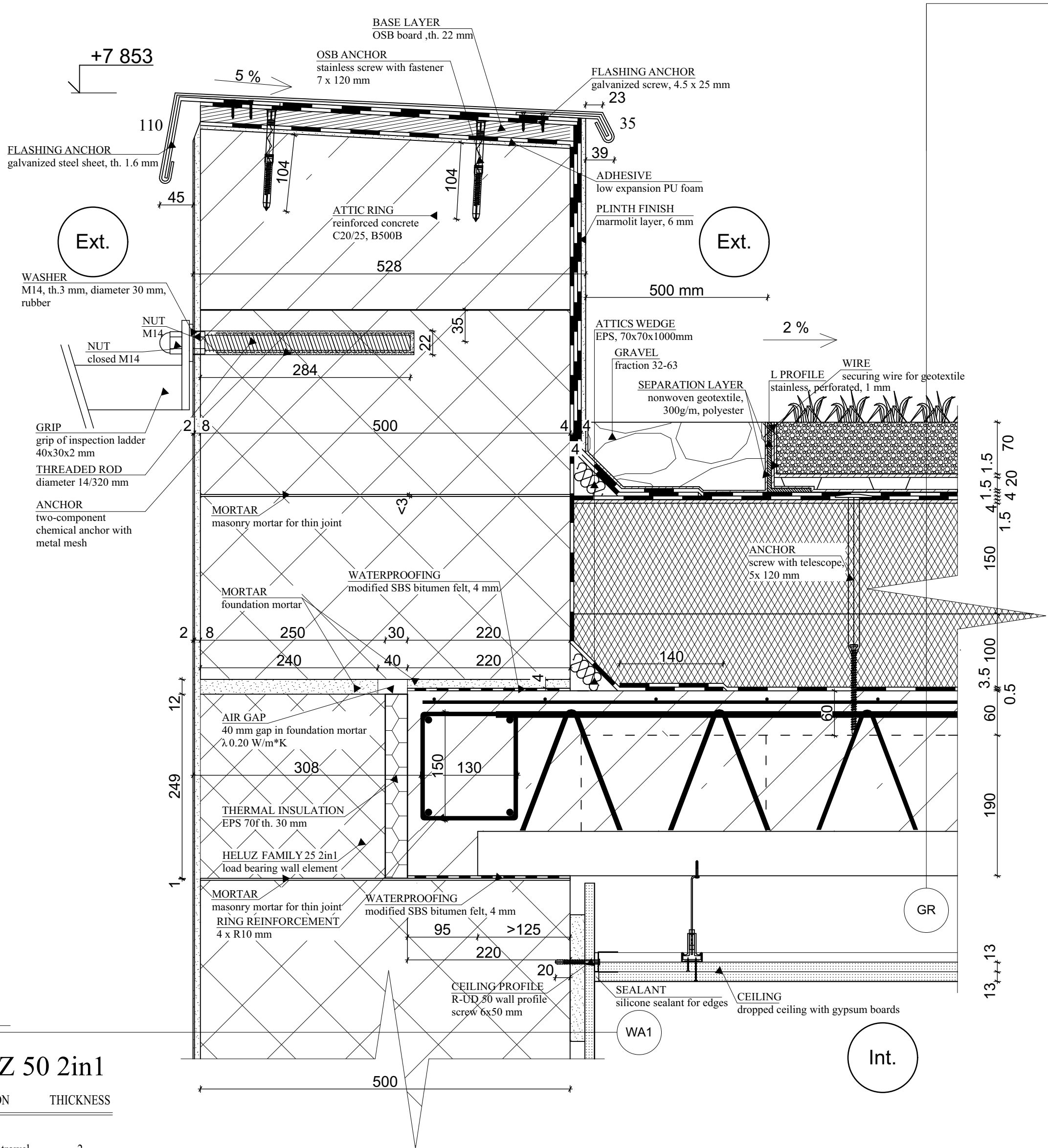


DETAIL F - ATTICS

SC 1:5

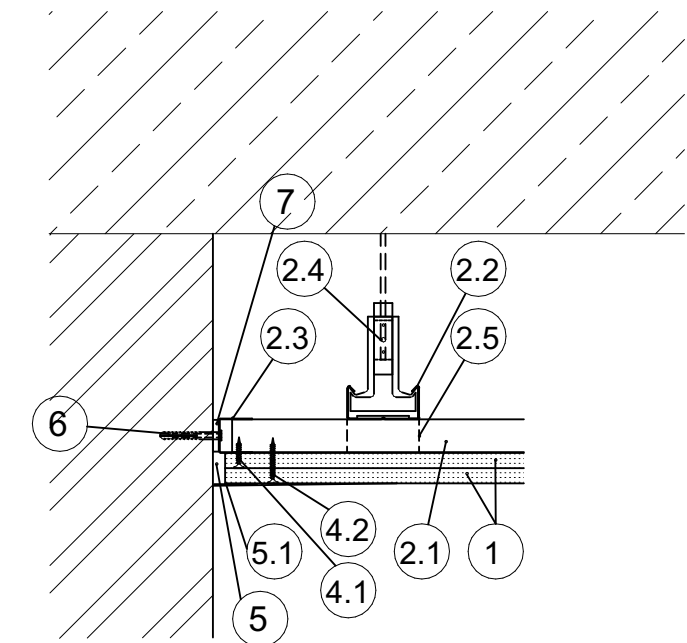
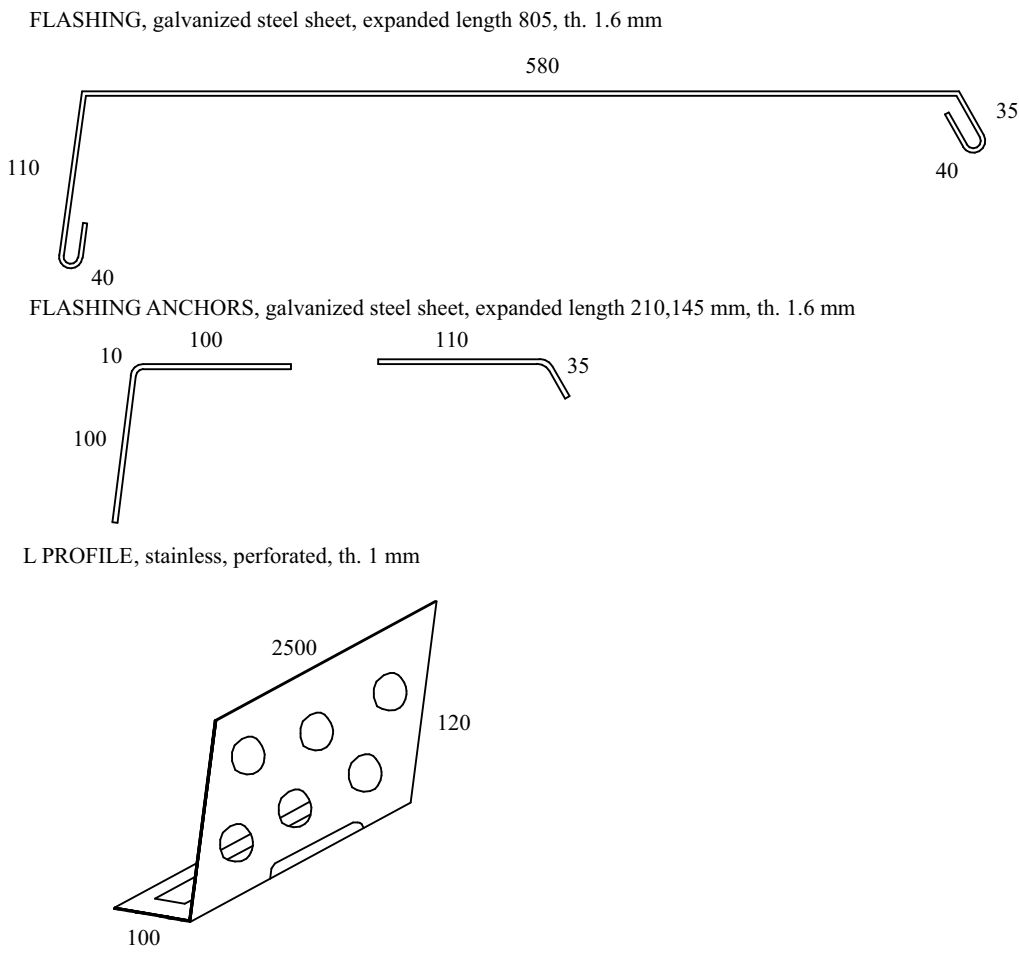


GR COMPOSITION OF GREEN ROOF I

N	FUNCTION	MATERIAL SPECIFICATION	STABILIZATION	THICKNESS
1	VEGETATION	EXTENSIVE SUBSTRATE vegetation carpet for succulents	-	70
2	FILTRATION	GEOTEXTILE nonwoven geotextile, 300g/m, polyester	-	1.5
3	DRAINAGE/ WATER ACCUMULATION	NOPIC FOIL/ DIMPLE MEMBRANE nop height 20 mm	-	20
4	SEPARATION	GEOTEXTILE nonwoven geotextile, 300g/m, polyester	-	1.5
5	WATERPROOFING	BITUMEN SHEET modified SBS, self-adhesive, top and bottom layer homogeneous elastomer coating, core layer glass textile	melted	3.5
6	WATERPROOFING	BITUMEN SHEET modified SBS, self-adhesive, top layer foil, core layer glass textile, bottom layer PE foil	anchored	3.5
7	SEPARATION	GEOTEXTILE nonwoven geotextile, 300g/m, polyester	-	1.5
8	LEVELING	THERMAL INSULATION EPS 200 polystyrene, thermal resistance R 5.80 m²K/W, coefficient of thermal conductivity λ_0 0.034W/m²K, fire reaction class E, compressive strength 250 MPa, diffusion resistance factor μ 100	-	140 <
9	THERMAL INSULATION	THERMAL INSULATION EPS 200 polystyrene, thermal resistance R 5.80 m²K/W, coefficient of thermal conductivity λ_0 0.034W/m²K, fire reaction class E, compressive strength 250 MPa, diffusion resistance factor μ 100	-	100
10	VAPOUR BARRIER	BITUMEN SHEET modified SBS, top layer separation foil, core layer aluminium foil, bottom layer PE foil	melted in points	3.5
11	PENETRATION	ASPHALT COATING asphalt emulsion, cold processed, sparse, solvent free, frost resistant	roller, brush or spraying machine	0.5
12	GROUTING	GROUTING CONCRETE concrete C20/25 XC1, consistency S3, with reinforcement mesh diameter 4/150	-	60
13	LOAD-BEARING	CEILING JOIST + CARTRIDGE reinforced concrete, fire reaction class A1, fire resistance REI 180 D1	-	190
14	CEILING	GYPSUM BOARD + INSTALLATION GAP suspended ceiling, coefficient of thermal conductivity λ_0 0.21W/m²K, fire reaction class A2-s1,d0, diffusion resistance factor μ 6-10, longitudinal expansion factor in case of humidity change $5\cdot 8\cdot 10^{-4}$, compressive strength 5.0 - 10.0 MPa	-	2x12.5

WA1 COMPOSITION OF EXTERNAL WALL HELUZ 50 2in1

N	FUNCTION	MATERIAL SPECIFICATION	STABILIZATION	THICKNESS
1	SURFACE FINISH	THIN-FILM PASTE PLASTER silicate, water vapour permeability $s_v < 0.14$ m, water absorption $w > 0.1$ and < 0.5 kg/m²* $\eta^{0.5}$, cohesion 0.32 MPa, grain 1.5, 2.0, 3.0 mm, coefficient of thermal conductivity $\lambda_{0,0.05}$ max 0.74W/m²K, fire reaction class A2-s1,d0	stainless steel trowel	2
2	PENETRATION	HIGH SHEAR PENETRATION UNDER SILICATE MATERIALS pH circa 11, solubility in water unlimited, drying time circa 12 hours CEMENT MORTAR FOR BASE LAYER TREATMENT + GLASS FIBRE MESH	roller, brush or spraying machine	-
3	CEMENT SPRAYING	compressive strength 6.0 MPa, adhesion min. 0.3 MPa, factor of diffusion resistance of water vapour max 35, coefficient of thermal conductivity λ max 0.82W/m²K, fire reaction class A1, grain 0-2 mm	stainless steel trowel or spraying machine	8
4	LOAD-BEARING/ INSULATION	LOAD-BEARING MASONRY BRICK WITH IMPLEMENTED INSULATION monolayer perimeter brick of zero, passive, low energy and energy-efficient buildings, heat transfer coefficient U 0.11W/m²K, thermal resistance R 9.16 m²K/W, coefficient of thermal conductivity λ_0 0.058W/m²K, fire reaction class B-s1,d0, fire resistance REI 30 DP1/90 DP3, airborne noise R_w 44(-1,-2), diffusion resistance factor μ 9.71	-	500
5	PENETRATION	CONCENTRATED WATER DISPERSION concentrated aqueous dispersions of artificial resins based on acrylic resins with additives, consumption 100g/m², dilution ratio 1:4, drying time circa 24 hours	roller, brush or spraying machine	-
6	ADHESIVE BINDER	GYPSUM ADHESIVE BINDER adhesion min. 0.24 MPa, fire reaction class A1, drying time min. 12 hours	stainless steel trowel	20
7	GYPSUM BOARD	GYPSUM BOARD coefficient of thermal conductivity λ_0 0.21W/m²K, fire reaction class A2-s1,d0, diffusion resistance factor μ 6-10, longitudinal expansion factor in case of humidity change $5\cdot 8\cdot 10^{-4}$, compressive strength 5.0 - 10.0 MPa	mechanically anchored	12.5
8	FILLER	UNIVERSAL PASTE FILLER bending strength > 320 N, fire reaction class A2-s1,d0	stainless steel trowel	-
9	PAINT	ONE-COMPONENT, WATER-SOLUBLE PAINT DESIGNED FOR GYPSUM BOARDS internal dispersion paint with organic binders and limestone fillers, water vapour permeability 0.02 m	brush or spraying machine	-



NO.	FUNCTION
1	PLASTERBOARD
2.1	MOUNTING R-CD PROFILE
2.2	LOAD-BEARING R-CD PROFILE
2.3	PERIMETER PROFILE UD
2.4	HANGER
2.5	ANGLED ANCHOR
4.1	SCREW 212/25 TN
4.2	SCREW 212/45 TN
5	ANCHORED TO PERIMETER STRUCTURE
5.1	REINFORCING TAPE

INSTALLATION

- 1) INSTALLATION OF R-CD PROFILES
- 2) APPLICATION OF THE MINERAL WOOL, WHICH WILL BE INSERT ABOVE THE R-CD PROFILE
- 3) IT IS NECESSARY TO PUT THE INSTALLATION OARDS ONE NEXT TO EACH OTHER. THERE CAN NOT E ANY GAP ETWEEN THEM
- 4) APPLICATION OF PLASTERBOARDS AS DROPPED CEILING, IT WILL BE ANCHORED ON THE R-CD PROFILE

NOTES:

- MORTAR USED FOR CONNECTION OF BRICKS IS SBC MORTAR FOR THIN JOINTS
- RING CONCRETE C 20/25, REINFORCEMENT B500B SPECIFIED BY STATIC CALCULATIONS

0.000 = 162.00 m.a.s.l., B.H.S. / COORDINATE SYSTEM S-JTSK

TYPE OF WORK	DIPLOMA THESIS	FAKULTA STAVEBNÍ Ústav pozemního stavitelství	
DRAWN BY	Bc. Richard Sasko		
SUPERVISED BY	Ing. Karel Struhala	PAPER FORMAT	8 * A4
CUSTOMER	John Davidson, Suворovova 2888/9, 902 01 Pezínok-Stará hora	DATE	01/2019
SITE LOCATION	Suворovova 2888/9, 902 01 Pezínok-Stará hora	PHASE	DPS
PROJECT TITLE	HOTEL	SCALE	D.1.2.09
BUILDING OBJECT	H-1 HOTEL	1:5	
PART	D.1.2 - Building Construction Solution		
DRAWING TITLE:	DETAIL F - ATTICS		